

EXHIBIT A

ACCESS  
MODIFICATIONS  
AS NEEDED

CHANGE DESIGN ORIENTATION FOR  
SITE SPECIFIC MODIFICATION



**COMPONENTS**



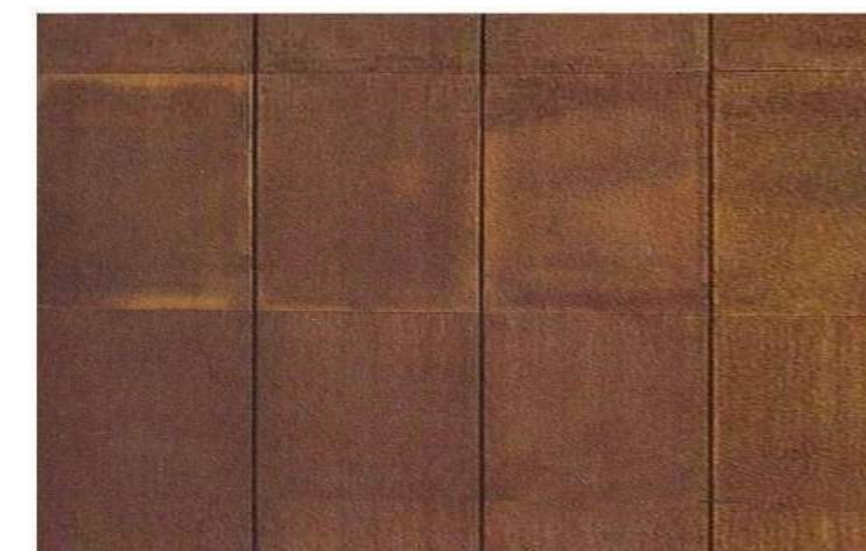
GALVANIZED STEEL



ACCENT RECLAIMED SIDING



COMPOSITE CEILING



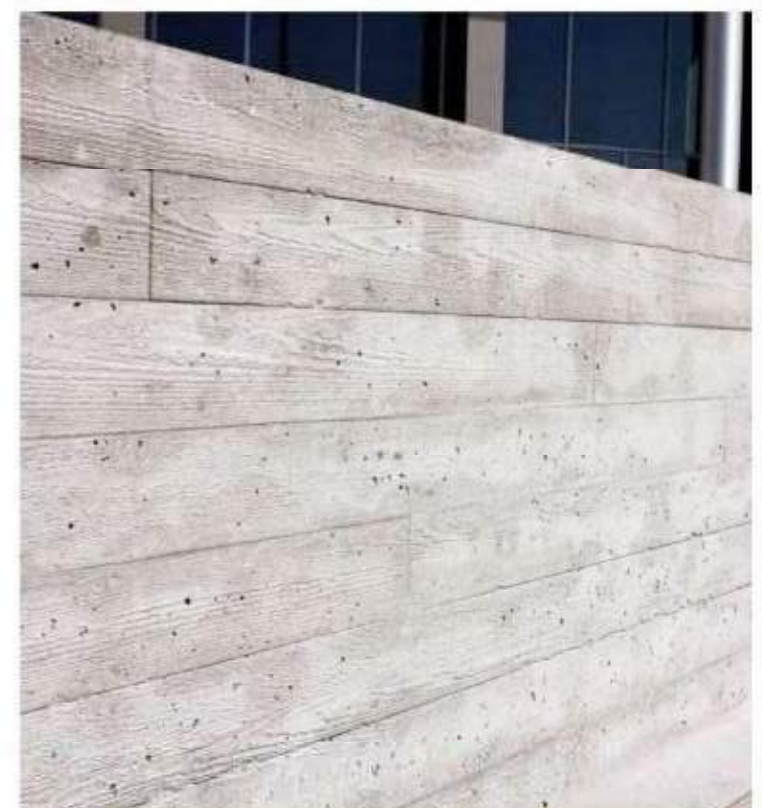
ACCENT PANEL SIDING



ACCENT METALS SIDING



LOCAL STONE



BOARDFORM CONCRETE

**MATERIALS**

**DESIGN VERSITILITY**



**TYPICAL STOP EXAMPLE**

BUS STOP PROTOTYPE  
TOWN OF MOUNTAIN VILLAGE

DATE ISSUANCE  
02/26/2024 DRB WORKSESSION

SCHEMATIC  
DESIGN

A101

The Town of Mountain Village is proposing the construction of a new bus stop on Mountain Village Blvd at the entrance to Village Court Apartments, as indicted on the map below.

