

Carson Taylor  
Director | Mountain Sales  
Telluride Ski & Golf, LLC

May 28, 2025  
Community Development Department  
Planning Division  
Town of Mountain Village  
455 Mountain Village Blvd  
Mountain Village, CO 81435

Dear Community Development Department:

During spring, summer and fall seasons the Mountain Sales office offers guests a multitude of easily accessible activities including Kids Camps, Bike Park Guides/Camps/Clinics, Zipline Tours, Bungee Trampoline and a Mining Sluice. Many of these activities have all been operated by the Telluride Ski & Golf Company since 2018.

Our application renewal requests that both the Spider Jump and Zipline Ground School activities remain positioned at their most recent and/or historical locations on lot OS-3U. The Mountain Sales & Zipline Tour Operations are the natural business units within Telluride Ski and Golf to oversee the sales, fulfillment, and operations of the summer activities per our ongoing commitment to the communications, training, customer service and annual state of CO permitting requirements to operate.

We feel it imperative to maintain both the Spider Jump and Zipline Ground School activities during spring and summer dates in order to foster a vibrant atmosphere in TMV's Gondola & Heritage Plazas and further support the family-oriented activity demands of our summer guest demographic. The availability of these activities in line of sight and short walking distance from the Mountain Village Gondola Plaza draws ideal volumes of summer guests to businesses in the core, which in turn increases sales tax revenues for TMV and sales revenues for TMV merchants. We believe that maintaining the recent locations of the Spider Jump and Zipline Tour Ground School activities adjacent to Gondola Plaza on OS-3U promote economic, social, cultural, and entertainment values.

Ground School is used as a training facility for the Zipline Adventure participants to learn and practice the skills necessary for safely navigating the zip line portions of the experience. For the inaugural summer (2021) of the Zipline Adventure, the Ground School was located in the woods off of the Upper Boomerang ski trail. After operating for a few summers and gaining a better understanding of the flow of our Zipline Adventure experience, the better location for this practice area is adjacent to the Mountain Village core. Should weather come in or if a guest goes through Ground School and realizes the experience is not for them, being close to the Mountain Village core is critical for the best experience. Having it near the Mountain Village core would also provide the added benefit of advertising the product for guests that did not know we offer such an immersive experience in the Mountain Village.

In its simplest form, Ground School consists of a zip line cable strung between two posts that is elevated approximately 5-10' of the ground with a slight grade. Once properly attached to the zip cable, guests can then practice the visual and tactile cues necessary in a "real world" setting. They can hang from the cable to feel the harness support them and they can glide slowly along cable to practice the proper speed control and self-assist techniques involved in the main experience of the Zipline Adventure. We've constructed the Ground School in the area just south of the Magic Carpet on OS-3U (highlighted in the accompanied map). The structure consists of two large posts approximately 15' in height, with a zip line cable approximately 45' in length strung between them (pictures of the current Ground School, for visual reference, included). The Ground School on OS-3U is a seasonal, temporary structure that would be installed late-May and removed mid-October each year.

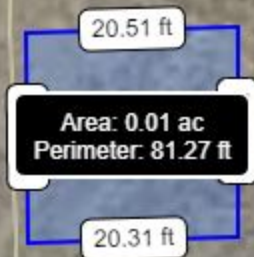
For all activities, we intend to deploy a similar approach to marketing the summer, adventure activities as we do with our winter lift access segments i.e. bi-weekly e-newsletter, geo-targeted social media ad campaigns, direct mail, summer tourism guide (TTB), etc...

Our operational objectives detail a June 21, 2025 opening, with a 7 day operational schedule (9am – 5pm) through September 1, 2025 (Labor Day). After Labor Day, we will begin breaking down the Spider Jump activity and moving it off the respective location for fall/winter storage (off-site). Ground School will remain in operation weekends only through September 28, 2025. Thereafter that activity will be deconstructed and moved off-site for fall/winter storage. Signage for each activity is based from historical standards utilizing existing resources from previous years with all sales stemming from the Mountain Activity Sales office located beneath the Mountain Village Gondola Plaza in what is the winter's lift ticket, pass, and ski school office.

Carson Taylor

Director | Mountain Sales

477903101036

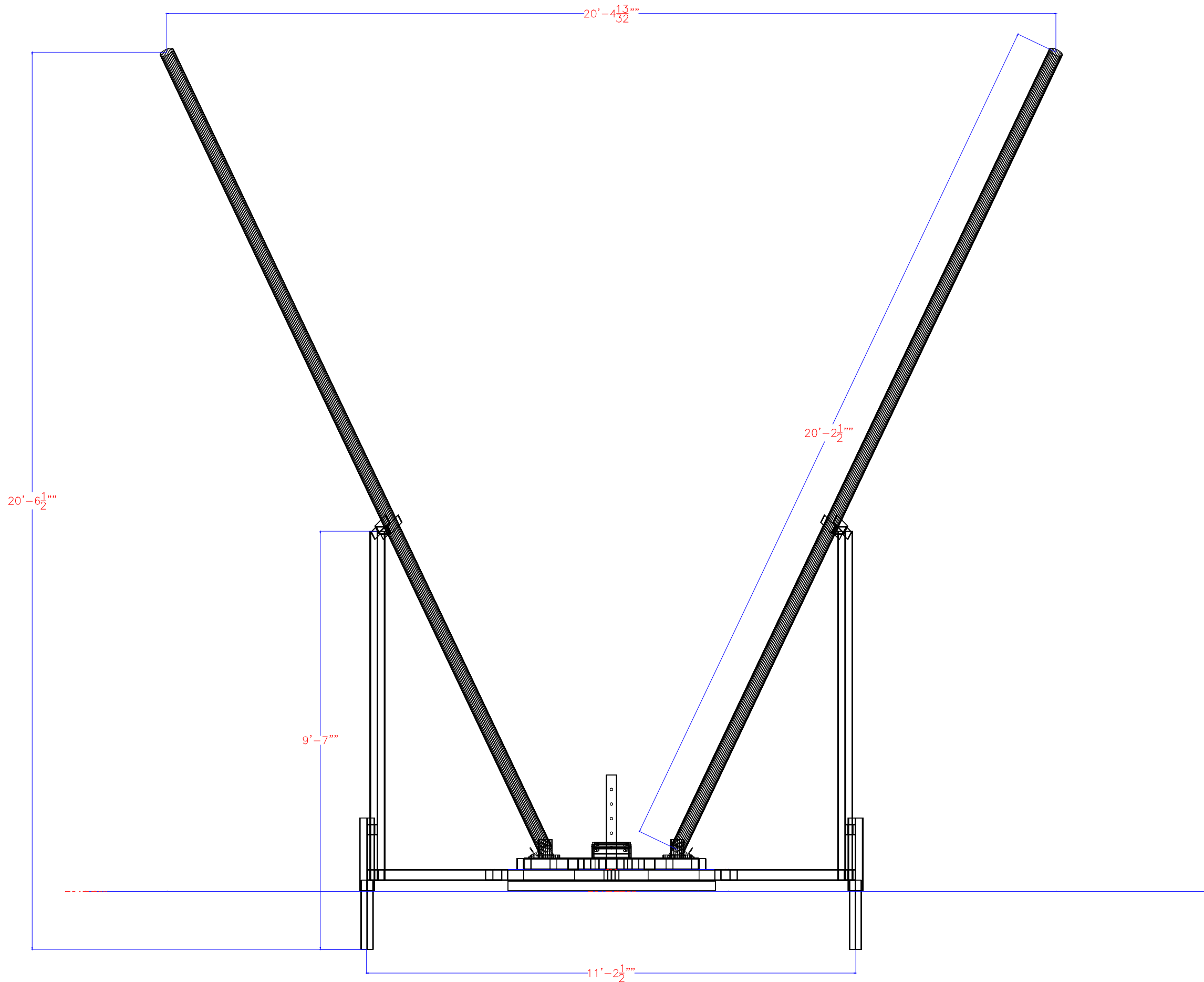


OS 3U

4779031

TS

477903101035

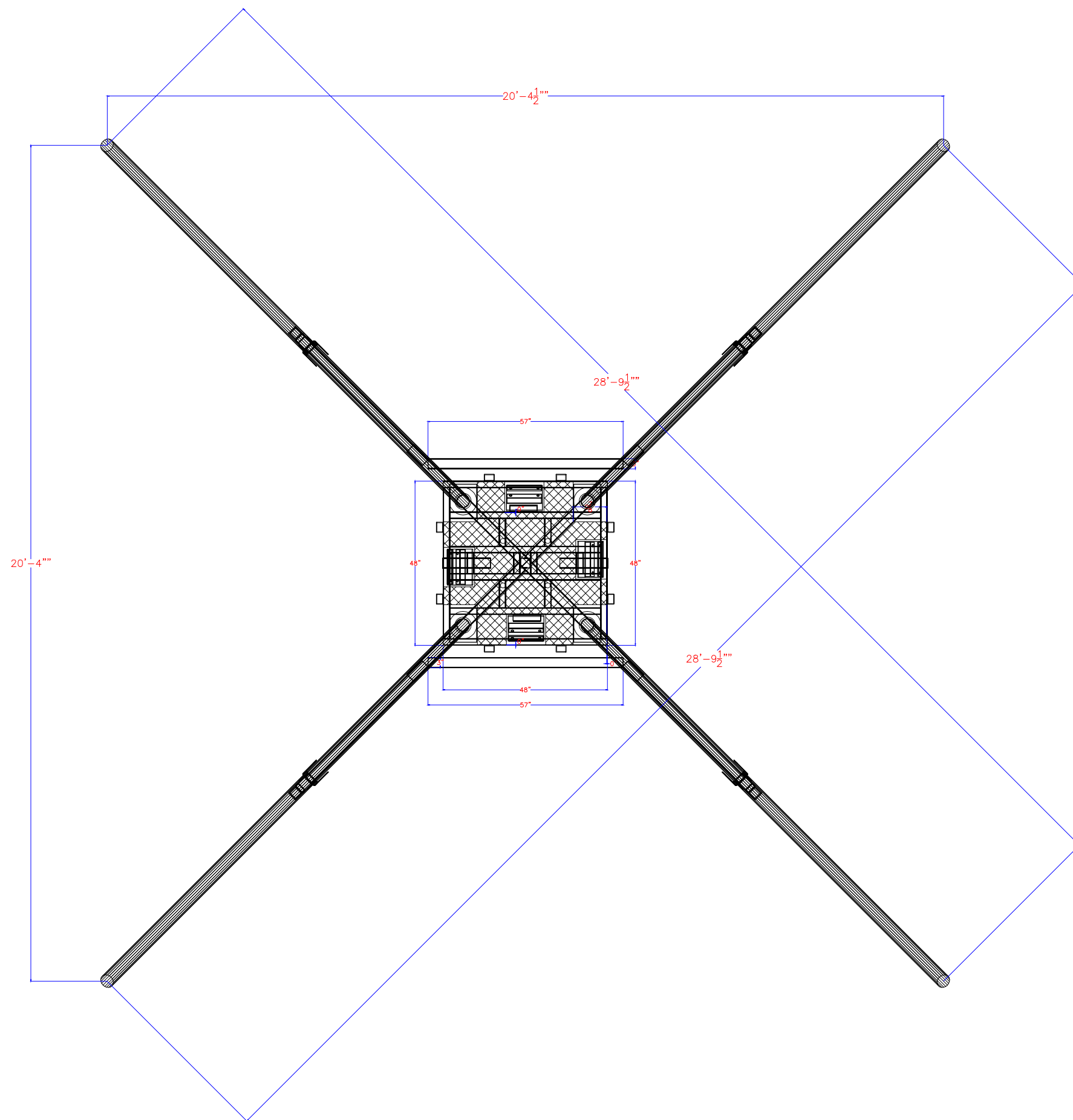


Revisions

Date:  
00-00-0000

SPIDER JUMP  
Drawn by: MATT PERRY

SHEET  
A2



Date:

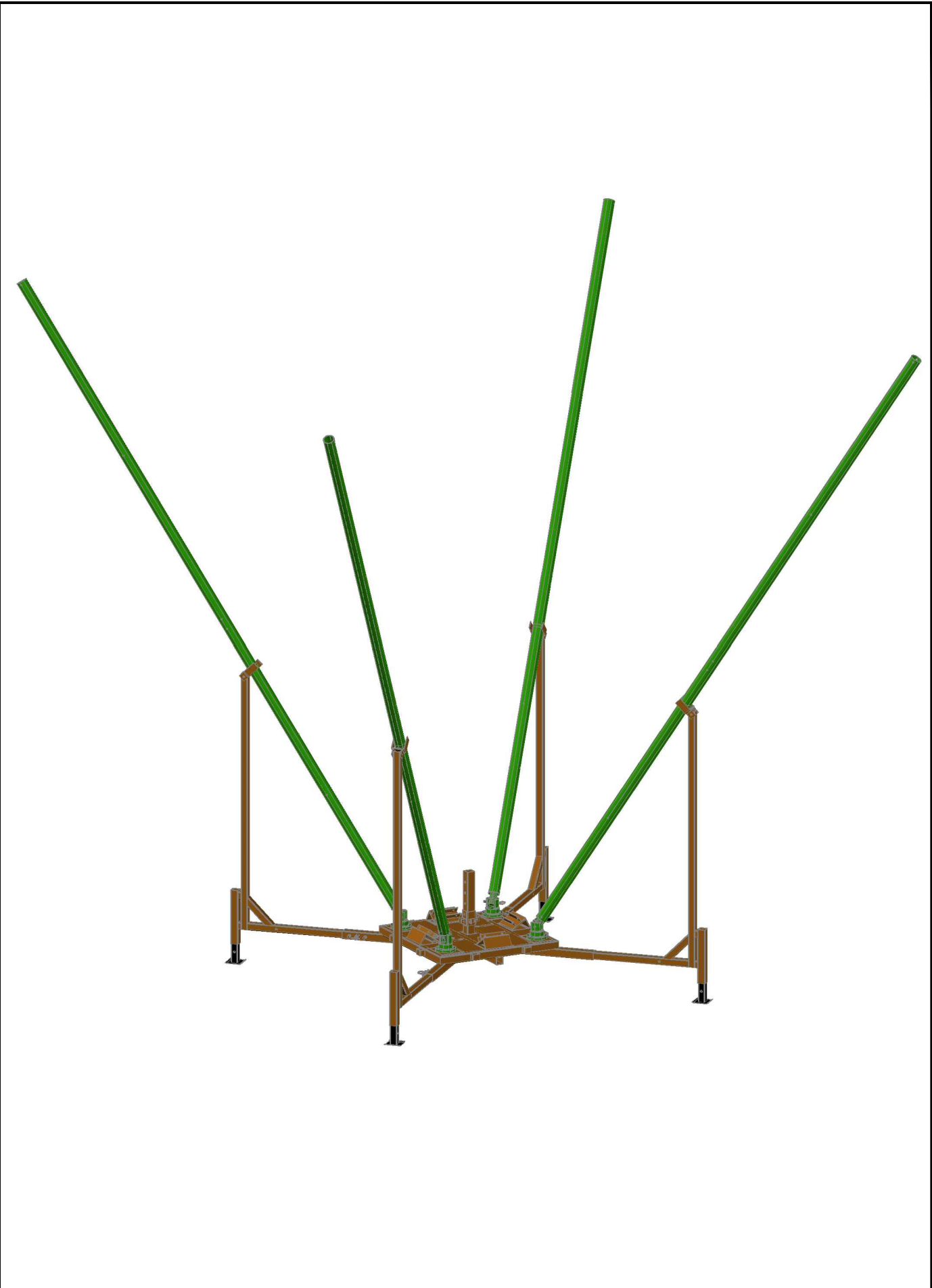
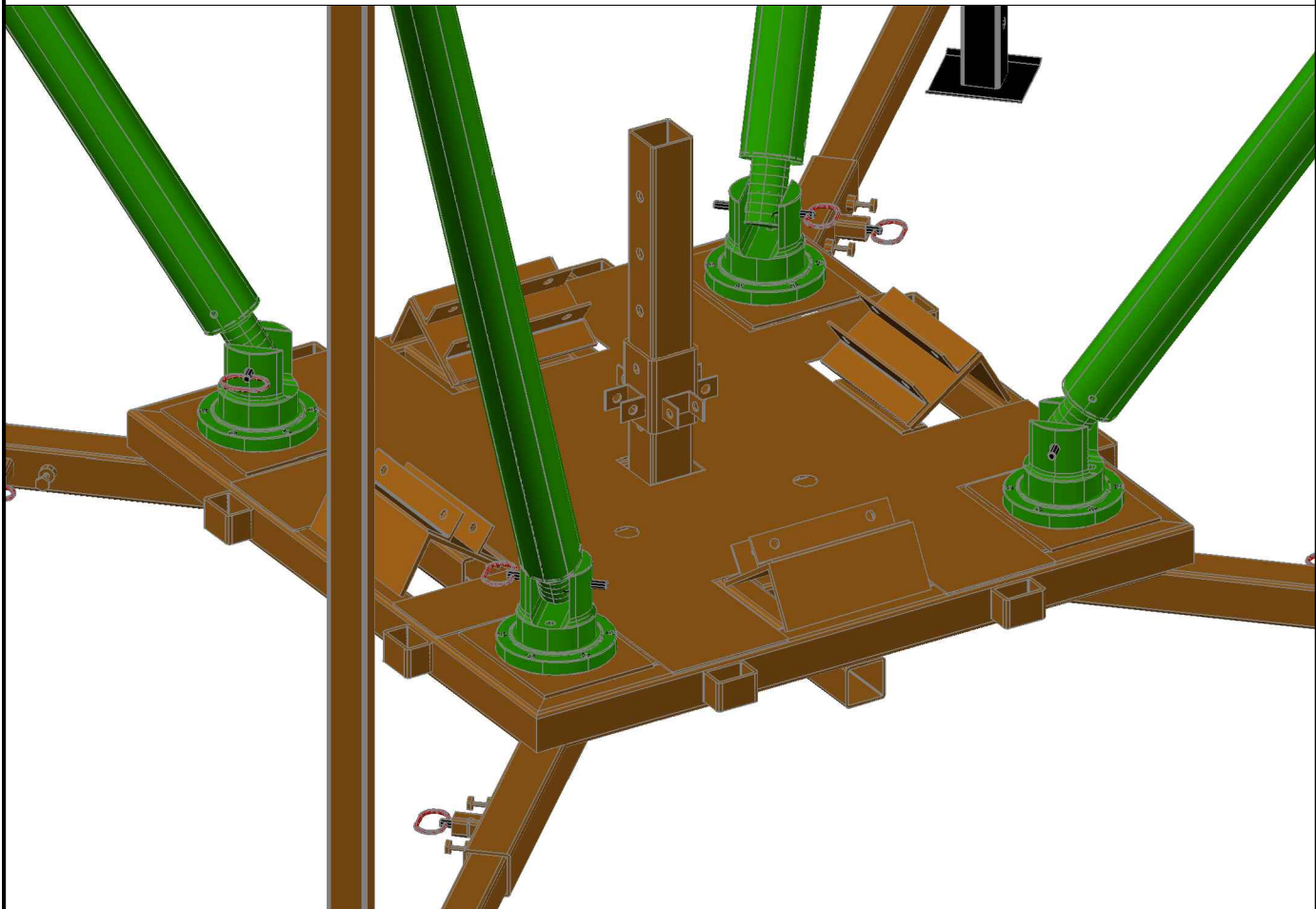
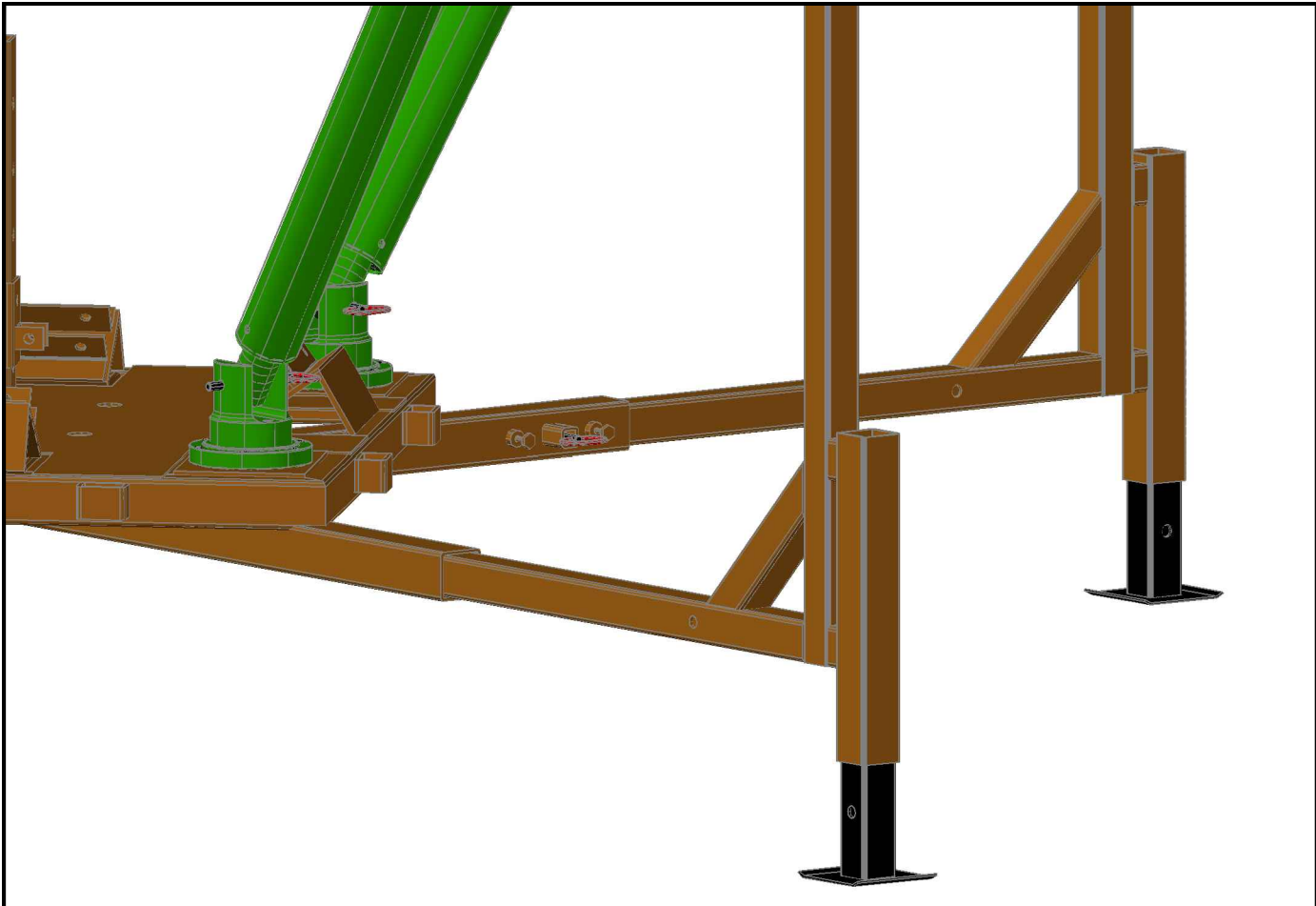
00-00-0000

Drawn by: MATT PERRY

SHEET

# A1





Revisions	
Date:	
00-00-0000	
SPIDER JUMP	Drawn by: MATT PERRY
SHEET	
A3	









I want to...



Aerials20...

1:500

0 20 40ft



















