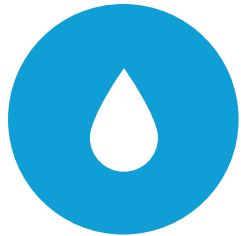




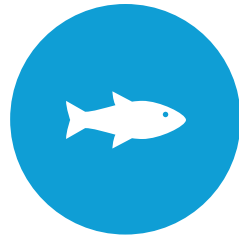
# San Miguel Watershed Coalition Water Quality Monitoring



# Why?



ENVIRONMENTAL  
SURFACE WATER QUALITY



EPA AQUATIC LIFE USE  
STANDARDS



SUBMIT DATA TO CDPHE  
WATER QUALITY CONTROL  
DIVISION AND EPA



DEVELOP STANDARDS  
AND TMDL'S



PUBLICLY AVAILABLE DATA

# What?

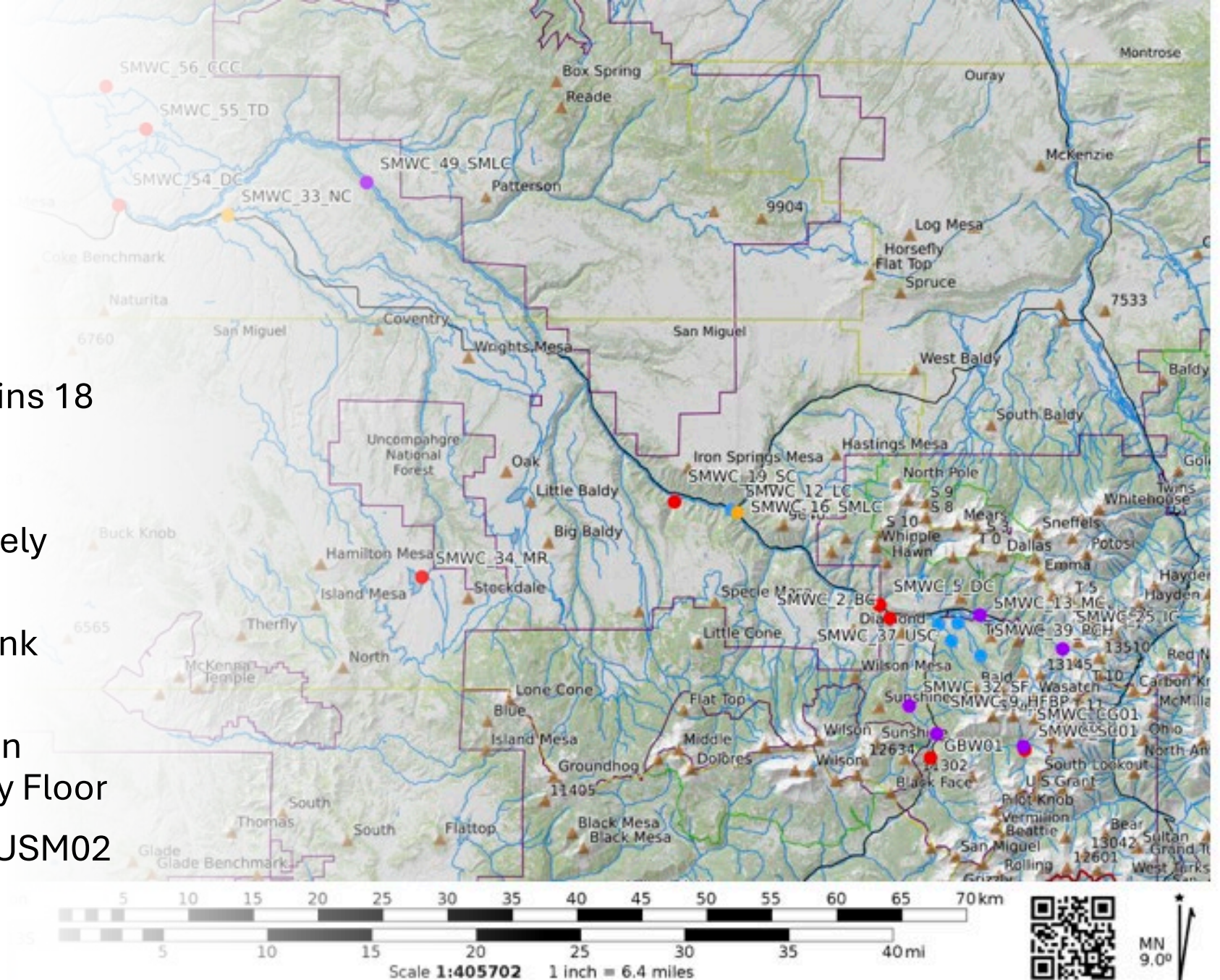
- Metals
- Nutrients
- Field parameters (DO, pH, conductivity, temp)
- Discharge flow

2. All tributaries and wetlands to the San Miguel River from its source to a point immediately below the confluence of Leopard Creek, except for listings in Segments 1, 6a, 6b, 7a, 7b, and 8.

COGUSM02	Classifications	Physical and Biological		Metals (ug/L)		
Designation	Agriculture	DM	MWAT	acute	chronic	
Reviewable	Aq Life Cold 1 Recreation E Water Supply	CS-I	CS-I	Arsenic	340	---
Qualifiers:		acute	chronic	Arsenic(T)	---	0.02
Other:		D.O. (mg/L)	6.0	Cadmium	TVS	TVS
Temporary Modification(s):		D.O. (spawning)	7.0	Cadmium(T)	5.0	---
Arsenic(chronic) = hybrid		pH	6.5 - 9.0	Chromium III	---	TVS
Expiration Date of 12/31/2024		chlorophyll a (mg/m <sup>2</sup> )	TVS	Chromium III(T)	50	---
*Uranium(acute) = See 35.5(3) for details.		E. coli (per 100 mL)	126	Chromium VI	TVS	TVS
*Uranium(chronic) = See 35.5(3) for details.		Inorganic (mg/L)		Copper	TVS	TVS
		acute	chronic	Iron	---	WS
		Ammonia	TVS	Iron(T)	---	1000
		Boron	0.75	Lead	TVS	TVS
		Chloride	250	Lead(T)	50	---
		Chlorine	0.019	Manganese	TVS	TVS/WS
		Cyanide	0.005	Mercury(T)	---	0.01
		Nitrate	10	Molybdenum(T)	---	150
		Nitrite	0.05	Nickel	TVS	TVS
		Phosphorus	TVS	Nickel(T)	---	100
		Sulfate	WS	Selenium	TVS	TVS
		Sulfide	0.002	Silver	TVS	TVS(tr)
				Uranium	varies*	varies*
				Zinc	TVS	TVS/TVS(sc)

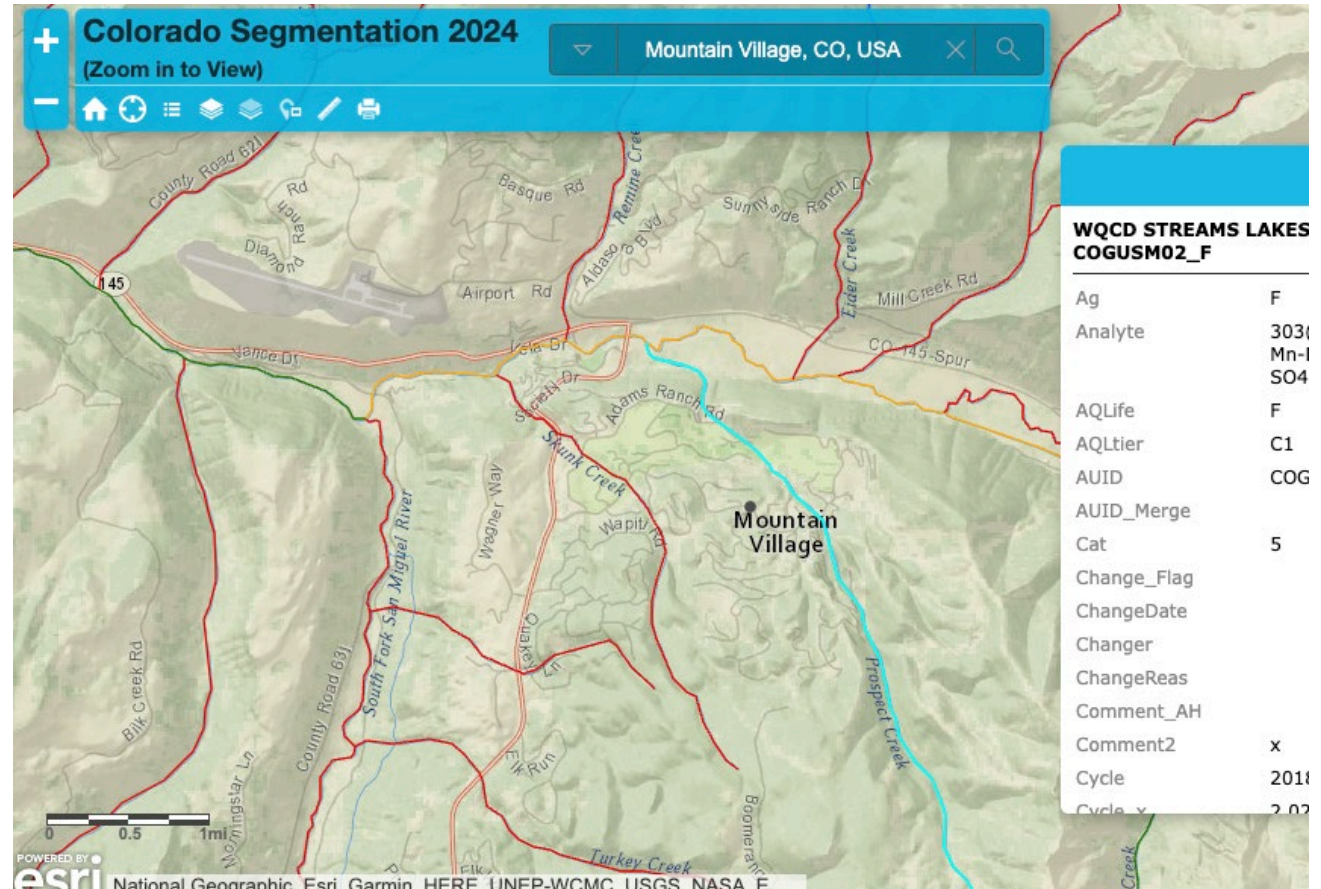
# Sites

- SMWC currently maintains 18 sites in the Watershed
- 4 sites are within TOMV boundaries or immediately upstream/downstream
- Prospect Creek and Skunk Creek
- Additional CDPHE site on Prospect Creek on Valley Floor
- All sites are within COGUSM02

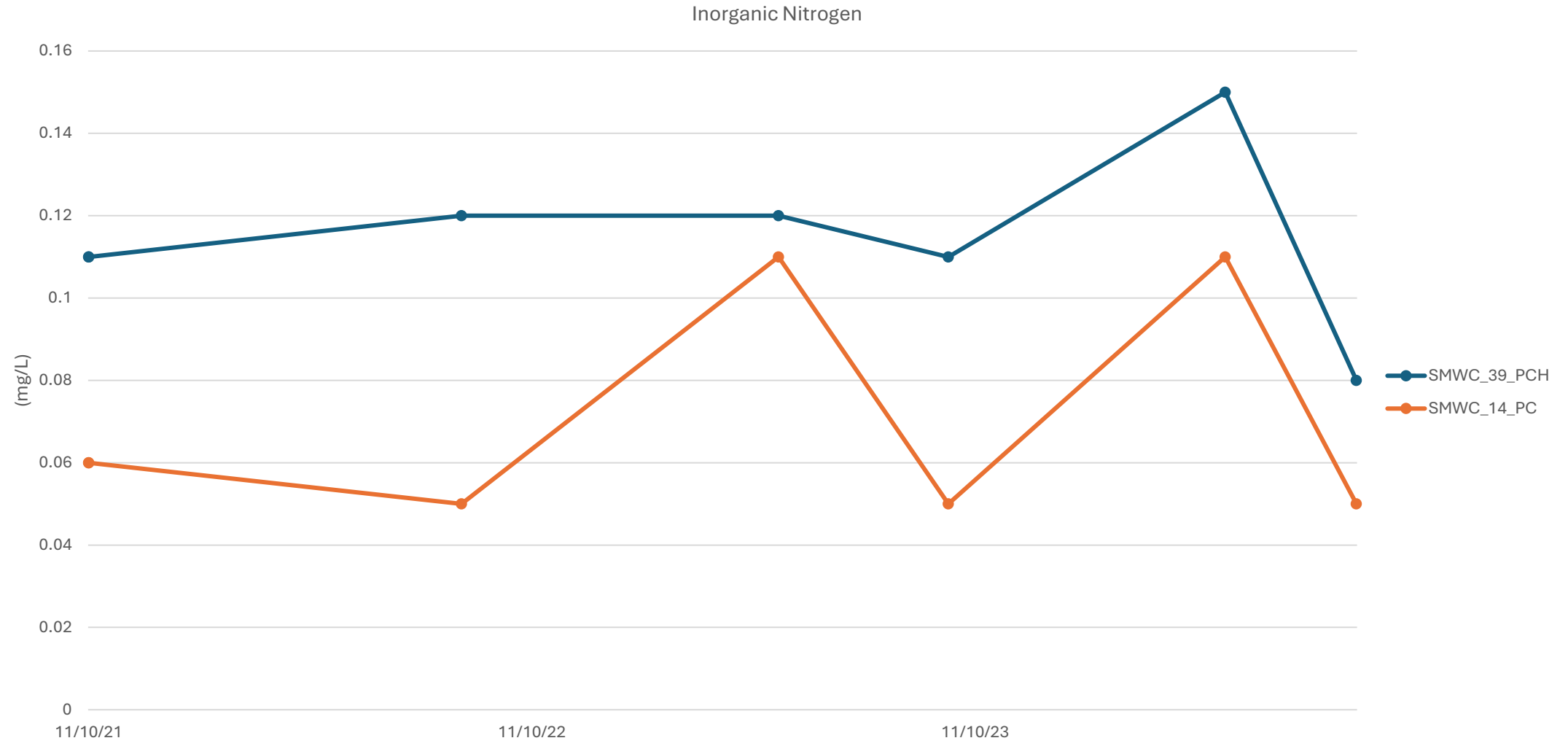


# Regulation 35 - Classifications and Numeric Standards for Gunnison and Lower Dolores River Basins (DWR Division 4)

- COGUSMO2
- *All tributaries, including all wetlands, to the San Miguel River, from the source to Leopard Creek, excluding Bear Creek, Cornet Creek, Muddy Creek and Howard Fork above Swamp Canyon.*
- 303(d) list of impaired waters for:
  - Fe-D (dissolved iron)
  - Mn-D (dissolved manganese)
- M&E (monitoring and evaluation) list for:
  - As-T (total Arsenic)
  - SO4 (sulfate)



- Minimum quantification limit = .02 mg/l



# Metal Exceedances October 2024

	Result Value (ug/L)	acute (ug/L)	chronic (ug/L)
Arsenic, dissolved	1.01	340	n/a
Arsenic, total recoverable	1.32	n/a	0.02
Iron, dissolved	65.7	n/a	300
Iron, total recoverable	406	n/a	1000
Manganese, dissolved	32.9	3258	1800
Sulfate	14.8	n/a	250

\*based on TVS hardness 130 mg/L



TOMV  
Budget

Task	Price	Quantity	Task Cost
Field Labor	\$50.00	36	\$1,800.00
Shipping	\$250.00	2	\$500.00
Equipment Fee	\$100.00	2	\$200.00
Metals Lab	\$444.00	4	\$1,776.00
Nutrients Lab	\$444.00	4	\$1,776.00
Data Organization	\$50.00	27	\$1,350.00
Analysis/Interpretation	\$50.00	26	\$1,300.00
		Subtotal	\$8,702.00
		Indirect 15%	\$1,305.30
		<b>Total</b>	<b>\$10,007.30</b>



# Funding

DRMS \$9,000

SWCD \$7,000

TOMV \$10,000

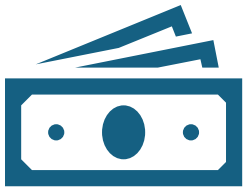
San Miguel County \$5,000

TOT Off Year from CCAASE

Telluride Foundation \$5,000

Total \$35,000

# Future Plans



Leverage local funds for  
CDHE Nonpoint Source  
Grant



Full Watershed Analysis



Integrated Hydrologic  
Modeling of Water  
Quality  
Constituents/Pollutants



Action Plan